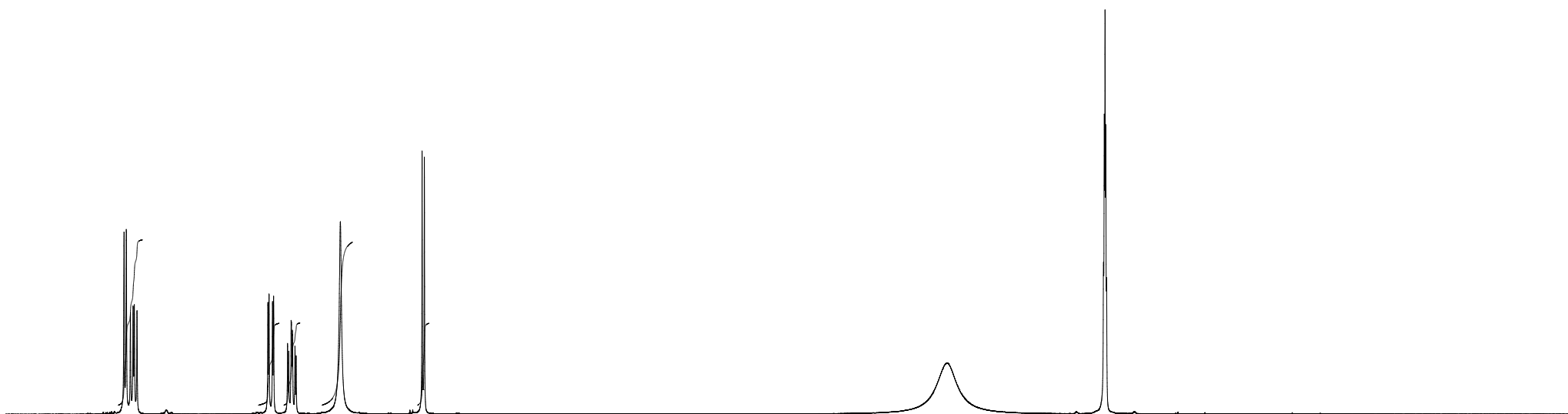
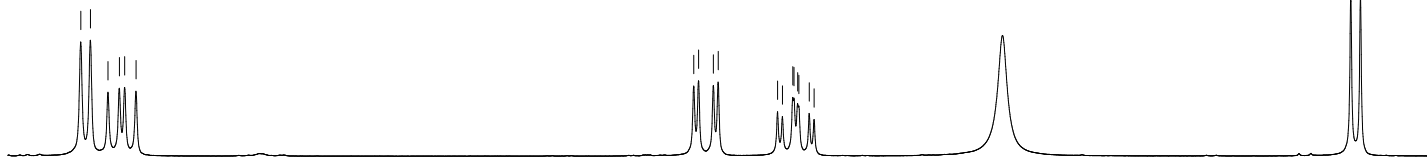


3319.403
3313.907
3304.135
3297.843
3294.870
3288.586

2978.743
2976.080
2967.838
2965.178
2932.197
2929.499
2923.738
2923.053
2921.045
2920.390
2914.591
2911.887

2613.744
2608.370



2.02

1.00
1.00

1.00

1.00

ppm (t1)

8.0 7.0 6.0 5.0 4.0 3.0 2.0 1.0 0.0